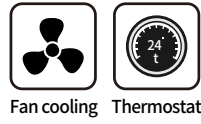
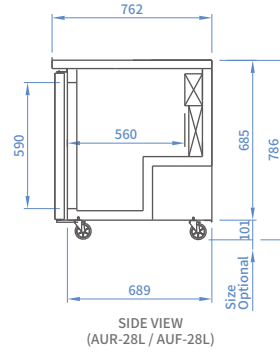
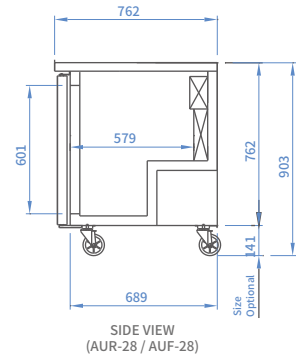
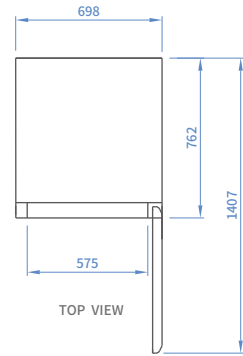


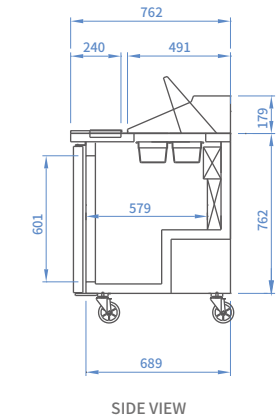
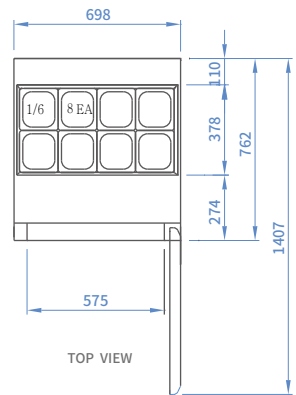
# BACK MOUNTED UNDER COUNTER



AUR-28(L)  
AUF-28(L)



AST-28



MODEL	AUR-28 AUF-28	AUR-28L AUF-28L	AST-28
Classification		Refrigerator / Freezer	
Cabinet dimension (WxDxH mm)	698x 762 x 903	698x 762 x 786	698x 762 x 1082
Capacity (ℓ)		184	
Inner Temperature (°C)	1~ 8 / -25 ~ -17	1~ 8 / -25 ~ -17	1~ 8
Refrigerant	R-134a / R-134a	R-134a / R-134a	R-134a
Insulation Type		Polyurethane / Cyclopentane + CFC Free	
Amps (A)	2.8/3	2.8/3	2.5
Voltage (V/Hz/Ph)		220 / 50 / 1	
Weight (Kg)	85	85	90
Power (W)	314	314	314
# of doors	4/6	4/6	1
Compressor (HP)	1/4 1/3	1/4 1/3	1/4



BAR LINE



SKIPIO