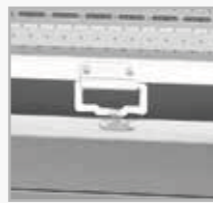




# UNDER COUNTER



- **FRONT BREATHING HOLE**



- **DIGITAL CONTROL SYSTEM**



- **QUALITY IMPORTED COMP**  
Enable highly efficient and operation



- **DOOR HANDLE**  
Easy grip recessed door handles



- **CONDENSER EASY CLEANING**

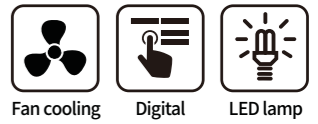


- **SHELVES**

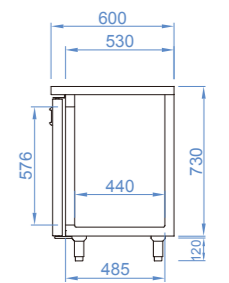
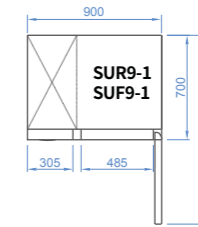


- **LED LAMP**  
Enhance the display effect, and reduces unnecessary energy consumption

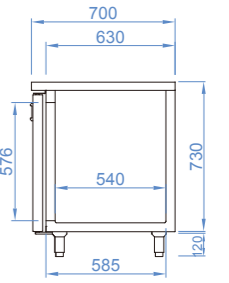
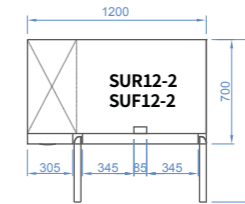
## UNDER COUNTER



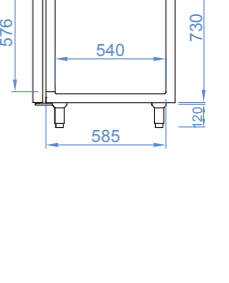
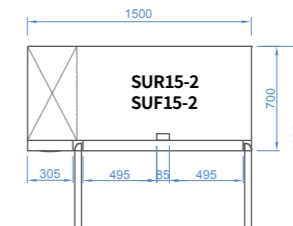
SUR9-1  
SUF9-1



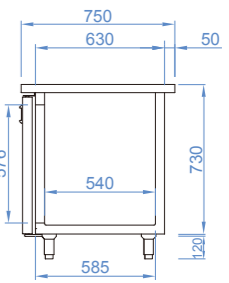
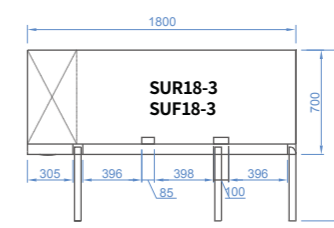
SUR12-2  
SUF12-2



SUR15-2  
SUF15-2



SUR18-3  
SUF18-3



MODEL	SUR9-1 SUF9-1	SUR12-2 SUF12-2	SUR15-2 SUF15-2	SUR18-3 SUF18-3
Classification	Refrigerator / Freezer			
Cabinet dimension (WxDxH mm)	900x 700(600) x 850	1200 x 700(600) x 850	1500 x 700(600) x 850	1800 x 700(600) x 850
Capacity (ℓ)	179	280	395	505
Inner Temperature (°C)	-2~ 8 / -21 ~ -12			
Refrigerant	R-134a/R-134a	R-134a/R-404a	R-134a/R-404a	R-134a/R-404a
Insulation Type	Polyurethane / Cyclopentane + CFC Free			
Amps (A)	2.3/2.3	2.5/2.5	2.5/3	3/4.4
Voltage (V/Hz/Ph)	220 / 50 / 1			
Weight (Kg)	72	84	93	109
Power (W)	314/366	314/613	314/613	366/613
# of doors	1	2	2	3
Compressor (HP)	1/4 1/3	1/4 1/3	1/4 3/4	1/3 3/4
# of Shelves	1	2	2	3