

BioSure
PROFESSIONAL

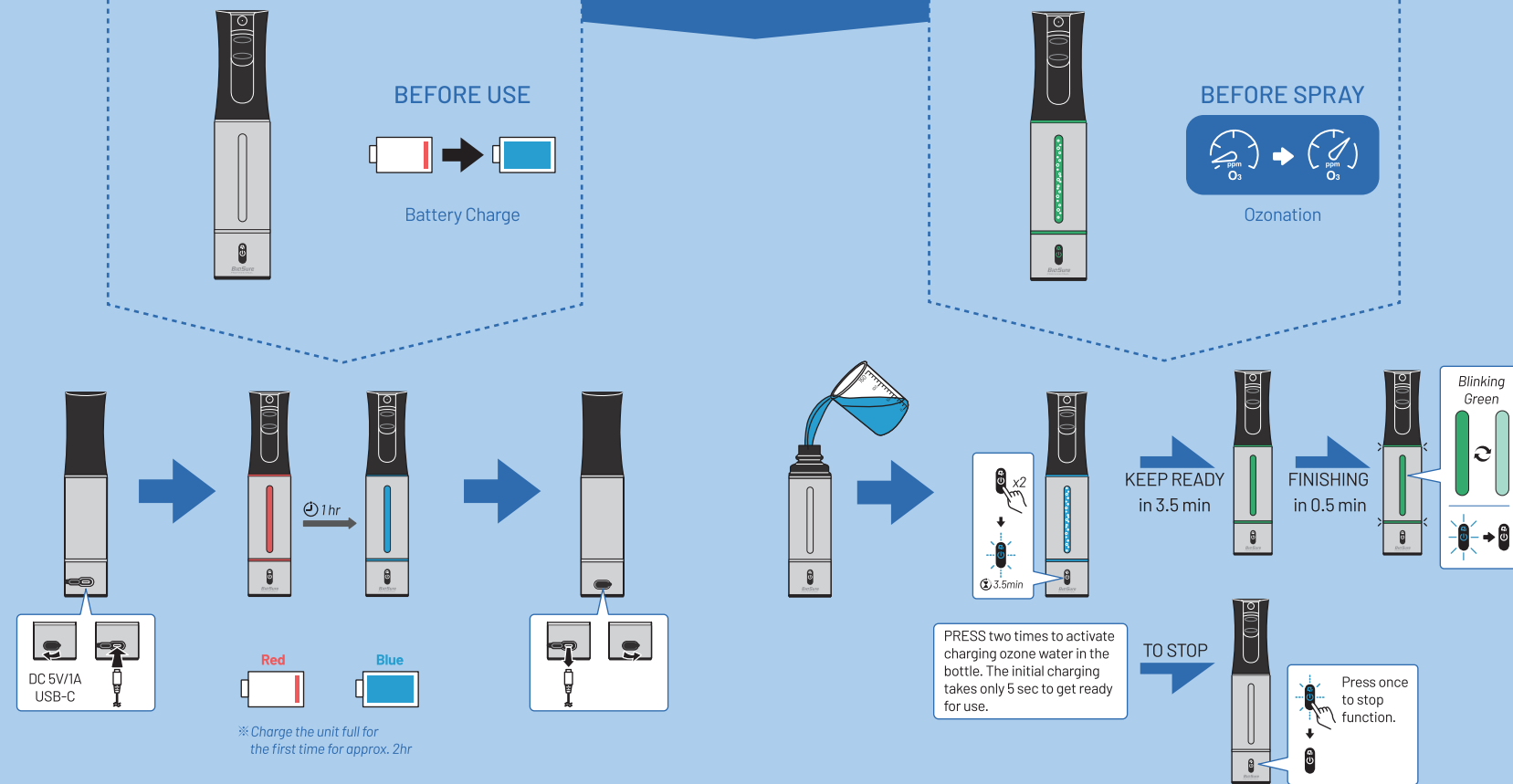
Professional Ozone Spray Bottle EOS7161-P



1

QUICK START GUIDE

2



LIMITED WARRANTY

BioSure Professional is a division of Biotech Environmental Science Ltd. ("BES"). BES warranties new equipment manufactured in BES's designated facilities to be free of defects due to poor materials or workmanship for the period of time listed below (following the date of original installation or purchase):

- 2 Years Parts Only Replacement (excluding wear and consumable parts)
- Pressurized Spray Head - wear part, 12 months
- Lithium Polymer Battery - 12 months
- Electrolytic Ozone Generator - 12 months

Exclusions: Certain BES parts that are expendable by nature and that need to be replaced frequently may not be covered. BES is not liable under these warranties for repairs or damages due to improper operation, attempted repairs or installation by unauthorized persons, alterations, abuse, fire, flood, or acts of nature. Additionally, this warranty may be voided in the case of:

- Failure to follow BES (and BioSure Professional) instructions for use, care, or maintenance
- Removal, alteration, or defacing of the BES-affixed serial number and other labels
- Mechanical damage
- Use of fluids other than clean, potable water

This warranty is conditional upon BES receiving notice of any defect subject to this warranty within thirty (30) days of its original discovery by the Buyer. For service or warranty questions, contact the BES service department or BES authorized dealer nearby.

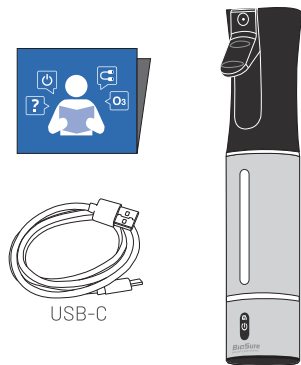
ATTENTION

- Do NOT use a power supply voltage other than being specified on the product.
- Do NOT plug or unplug the Power Cord if your hands are wet.
- BioSure Professional Ozone Spray Bottle is not a toy. Supervision is required when children present.
- Do not spray directly into the eyes.
- Dispose of properly.

This device is designed to generate ozone electrochemically in clean water, with the amount of ozone well below typical safety limits and regulations when used correctly. Ozone can be sensed by smell at a level as low as 0.02ppm. It is normal and expected to be able to detect a mild ozone smell from the open bottle mouth. However, ozone can be irritable if inhaled in instant large quantities. For safety, do NOT inhale the ozone gas produced by this device directly.



⚠ Do NOT attempt to remove the base of the bottle



Thank you for purchasing BioSure Professional product. Please read this manual carefully and follow the instructions for using this product.

BIOTEK ENVIRONMENTAL SCIENCE LTD.
www.besgroups.com

INSTRUCTIONS & REFERENCE GUIDE

CAUTION

- To reduce the risk of fire, do not expose the appliance to naked flame sources (for example, lighted candles).
- Do not expose the batteries (batteries installed) to excessive heat such as sunshine, fire or the like for a long time.
- Batteries need to be charged before use. Always refer to the manufacturer's instructions or equipment manual for proper charging instructions.
- After extended period of storage, it may be necessary to charge and discharge the cells or batteries several times to obtain maximum performance.



CAUTION ON CHARGING



When the USB plug is inserted in a wet condition, a short circuit occurs due to the liquid (tap water) attached to the main unit and charging cable or foreign matter, it may cause abnormal heat generation or malfunction.

Never insert USB plug when the main unit or charging cable is in wet condition.

PREPARATION

BE FAMILIAR WITH YOUR NEW PROFESSIONAL OZONE SPRAY BOTTLE.

CHARGE

If the spray bottle does not operate when activation button is pressed or a white light is ON after operation. The spray bottle needs to be recharged.

- Find the charging port on the back of the bottle.
- Connect the charging cable (USB-C, included) to the device.
- Connect the charging cable to an adaptor (output: DC 5V/1A) and plug them into a standard outlet.
- A breathing RED LED light indicates charging is taking place.
- Charging is complete when the indicator turns to be steady blue.

⚠ It is NOT recommended to charge and operate the unit at the same time.

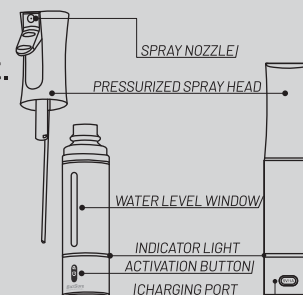
FILL

- Turn spray head on top counterclockwise and remove it from the bottle.
- Fill the bottle with cold tap water ONLY.
- Reattach the spray head to the bottle and turn clockwise to fasten it tightly.

⚠ Do NOT submerge under water. Do NOT add chemicals or soap. Use tap water ONLY.

※Recommended water quality:

Clean or filtered water, TDS > 60 ppm, Hardness < 180 ppm as CaCO₃.



USE

SANITIZE

- Generate ozonated water solution in the bottle.
- Continuously spray surfaces with ozonated water.
- Effectively kill germs especially on hard and non-porous surfaces.
- Wipe surface dry with clean cloth.

CARE

CLEAN

- Rinse the inside of the spray bottle with clean water ONLY. (※ NOT dishwasher safe)
- Wipe the bottle surface with a soft cotton, microfiber, or paper textile.
- If the tap water quality in your region is hard, it can cause scaling on the spray bottle. If there is scaling, fill the bottle with warm citric acid solution (or white vinegar) and then wait for 30 minutes. After descaling, pour out the citric acid solution and wash the bottle with clean water.

MAINTENANCE

To maintain consistent performance, follow these care instructions.

- Do NOT operate the bottle when it is empty or at low water level, this may damage the ozone generator.
- Clean and empty the bottle at the end of each day.
- Use only attachments and replacement parts sold or recommended by manufacturer.
- Use citric acid for every 3 months or every 4 weeks (depends on usage and water quality).

STORAGE

- Empty water from the spray bottle.
- Spray out the remaining water in the sprayer tube.
- Remove the spray head.
- Wait for the bottle dry, and then fasten the head.
- Store the spray bottle at room temperature, avoid dust.

PRECAUTIONS

ON SAFETY

- Important information such as the model name and product serial number are located on the bottom exterior.

ON PLACEMENT

- Do not set the unit in an inclined position.
- Do not leave the unit in a place subject to high temperature, such as direct sunlight, near a heat source or under lighting equipment.

ON CLEANING

- Do not use detergent nor solvents such as alcohol, benzine, thinner, to clean the bottle exterior surface.
- Do not clean the unit in a dishwasher.

OTHERS

- Do not use or leave the unit in an extremely cold or hot environment (temperature outside the range of 5 - 40°C).
- Even if you do not intend to use the unit for a long time, charge the battery to its full capacity once every 6 months to maintain its performance.
- Do not attempt to remove the base of the bottle. Attempting to unscrew the base of the bottle may result damage to the product and void the warranty.

※How to care for the unit when wet:

If the unit gets wet on the surface, wipe off the moisture using a soft, dry clean cloth. Be sure to wipe off excess moisture after filling the unit. After using the unit, drain all the water and leave it at room temperature, dry it until no moisture remains. Do not put the unit in a dish dryer to dry.

※System requirements for charging battery using USB-C:

Using a USB power supply capable of feeding in DC 5V 1A.

SPECIFICATIONS

OZONE TECHNOLOGY

Ozone generator: Built-in parallel plate electrodes electrolytic ozone generator. Up to 10500 activations per generator life.

Ozonated water concentrations:

Up to 3.0ppm*1

*1 Actual performance concentrations may vary from the listed data due to operating conditions. Max. concentration measured from the water in the bottle after activation completed. (TDS = 100 ppm and 20°C of water.)

WATER

Max. fill capacity: 150ml (5 fl. oz.)
Water temperature: 5 - 35°C (41 - 95°F)
Water quality requirements:

Total Dissolved Solids (TDS) > 60ppm;
Hardness < 180ppm as CaCO₃

BATTERY

Battery spec.: Lithium polymer 3.7V 1200mAh
Charging power: DC 5V 1A (using the USB power supply)
Charging time: 60 minutes approx. (first time charge 120min.)
Battery Capacity: Able to generate and prepare at least 12 full bottles (1.8L) ozonated water for use per charge.

GENERAL

Room temperature: 5 - 40°C (41 - 104°F)
Dimensions & Weight: 53mm (2") dia. x 255mm (10") [H], approx. 308g (0.67lbs) including battery (empty bottle)
Supplied accessory: USB Type-C cable (1), Spray head (1) [attached to the unit]

*Designed by BES in Taiwan. Assembled in China.
Design and specifications are subject to change without notice.*

TROUBLESHOOTING

| Problem | Possible Cause | Solution |
|--|---|--|
| WHITE LED lights on the bottle in the initial 5 sec of function activation | Battery considered low | Recharge the bottle |
| WHITE LED lights on the bottle in the initial 5 sec without proceed further activation | Battery too low | Recharge the bottle |
| No response after pressing the activation button | Battery empty | Recharge the bottle |
| | Bad battery | Contact service agent |
| RED LED not seen on the bottle during recharging | Bad or wrong adaptor or loosen connection | Replace adaptor or reconnect the charger |
| | Bad battery | Contact service agent |
| Slow blinking BLUE LED on the bottle during function activation | Water TDS too low (TDS < 40ppm) | Reduced function performance is expected. Correct water for use |
| Fast blinking RED & GREEN LED during function activation ※Function suspended | Water TDS too high (TDS > 600ppm) | Correct water for use |
| Less or reduced function performance | Water TDS low | Correct water for use |
| | Significant scaling developed | Clean bottle with warm citric acid or cleaning vinegar solutions |
| Slow blinking RED LED on the bottle during function activation | Ozone generator life finished | Contact service agent |
| Shorter operating cycles | Battery near end of life | Contact service agent |